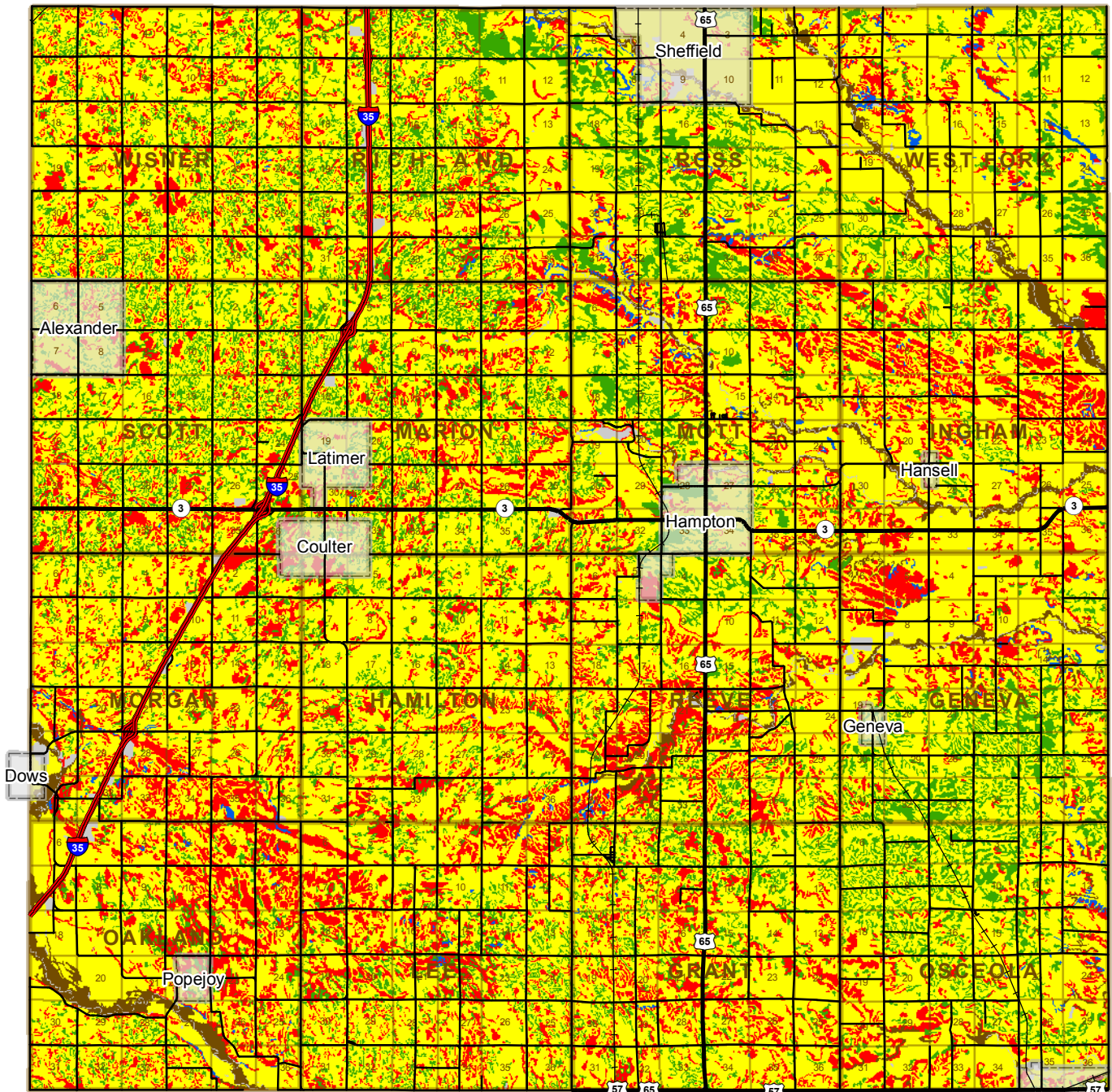


MAP 5: LAND CAPABILITY CLASSIFICATION FRANKLIN COUNTY, IOWA



Land Capability Classification: Land capability classification is a system of grouping soils primarily on the basis of their capability to produce common cultivated crops and pasture plants without deteriorating over a long period of time. This classification was developed by the USDA - NRCS.

- No solid data available.
- Class 1: Soils have slight limitations that restrict their use.
- Class 2: Soils have moderate limitations that restrict the choice of plants or require moderate conservation practices.
- Class 3: Soils have severe limitations that restrict the choice of plants or require very careful management, or both.
- Class 4: Soils have very severe limitations that restrict the choice of plants or require very careful management, or both.
- Class 5-7: Soils have slight to very severe limitations that make them unsuited for cultivation and limit other uses such as pasture, range, forestland, or wildlife food and cover.

PLEASE NOTE: This map is for general reference only. More detailed information and maps are available at county offices.

Legend	
	Township Line
	Section Line
	Corporate Limits
	Railroad
	Water
	Interstate Highway
	Federal or State Highway
	County or Local Road



The Data is provided "as is" without warranty or any representation of accuracy, timeliness or completeness. The burden for determining accuracy, completeness, timeliness, merchantability and fitness for or the appropriateness for use rests solely on the requester. Franklin County makes no warranties, express or implied, as to the use of the Data. There are no implied warranties of merchantability or fitness for a particular purpose. The requester acknowledges and accepts the limitations of the Data, including the fact that the Data is dynamic and is in a constant state of maintenance, correction and update. Prepared by the Franklin County GIS Department in January 2010.